

World Wetland Day

February 2



WETLANDS ARE BIOLOGICALLY DIVERSE

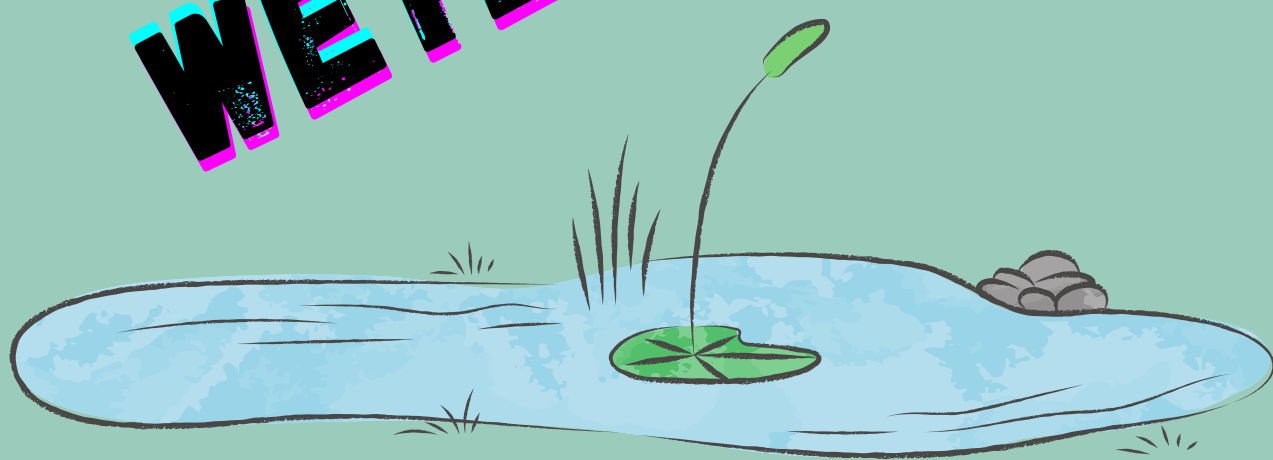
Marshes, ponds, estuaries, mangroves, lakes are highly moisturized



WETLANDS ARE LIFE

- **CONTROLS EROSION**
- **ENHANCES WATER QUALITY**
- **MAINTAIN STREAM FLOW**
- **HOME FOR MANY ENDANGERED & THREATENED SPECIES**
- **BUT SPACE REQUIREMENT IS A PROBLEM FOR RESTORATION IN THE LOCATION OF HIGH POTENTIAL**

PROTECT OUR WETLANDS !!



Wetland for our future sustainable livelihoods

**Barasat Government College
Department of Zoology**

